



AWS Heroes in 15:

Bear Conservation with ML, Serverless and Citizen Science

Ed Miller (he/him)

Senior Principal Engineer, Strategic Alliances Technical Marketing, Arm
Director and Developer, BearID Project

Agenda

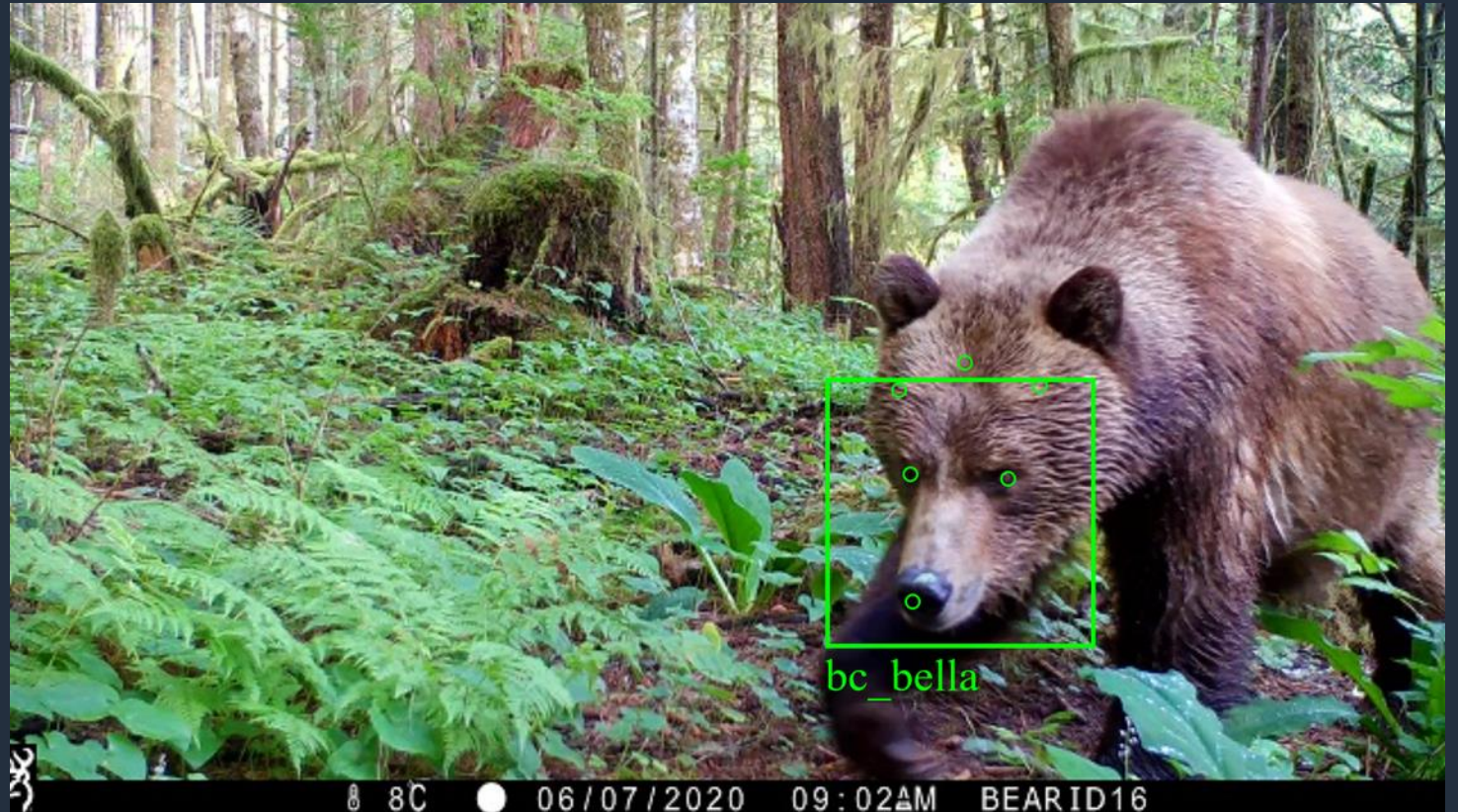
BearID Project

Explore.org

Bearcam Companion

What's next

Links & Resources





BearID Project overview



Collaborative effort between ecologists and software engineers



Develop a robust, open-source, automated software tool to identify individual bears with >90% accuracy

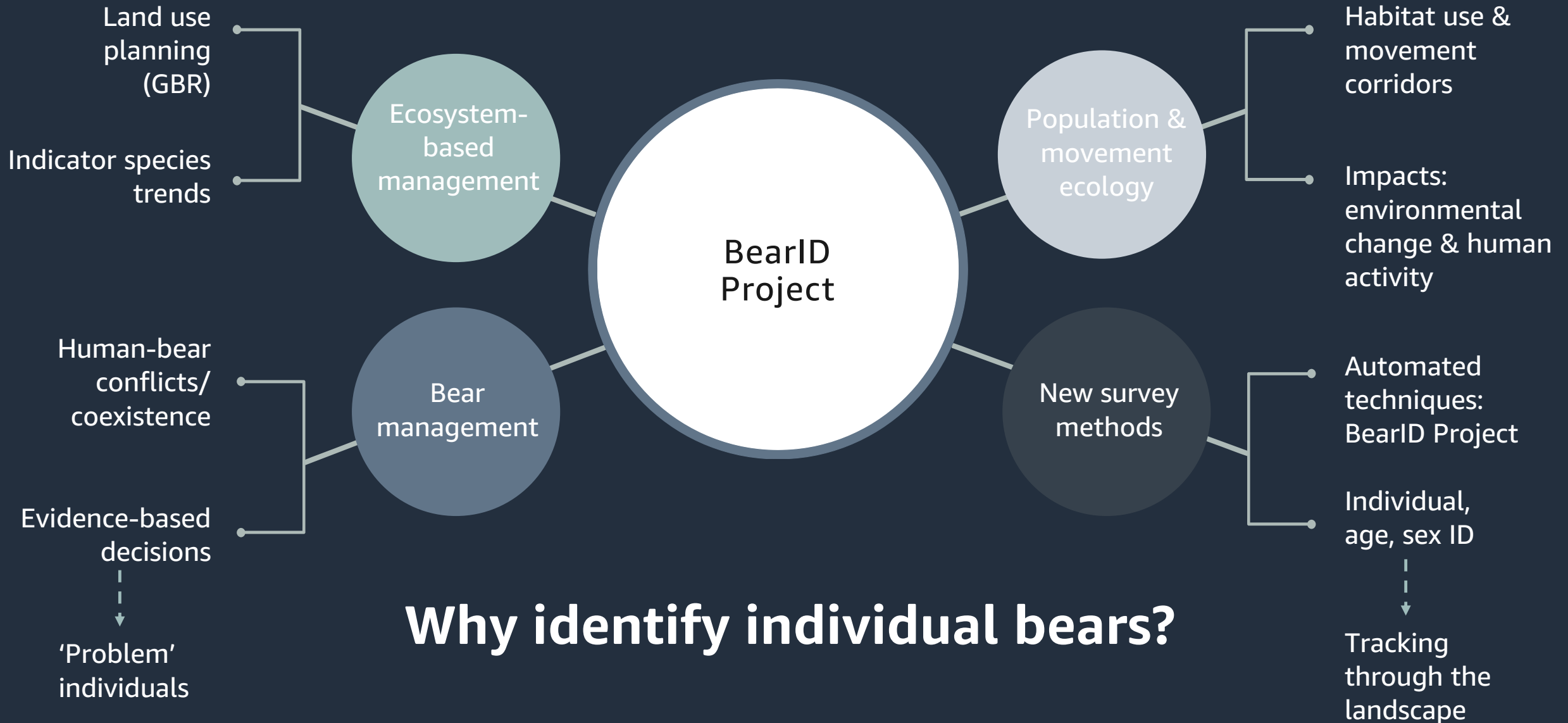


Current photo-ID via face recognition results:

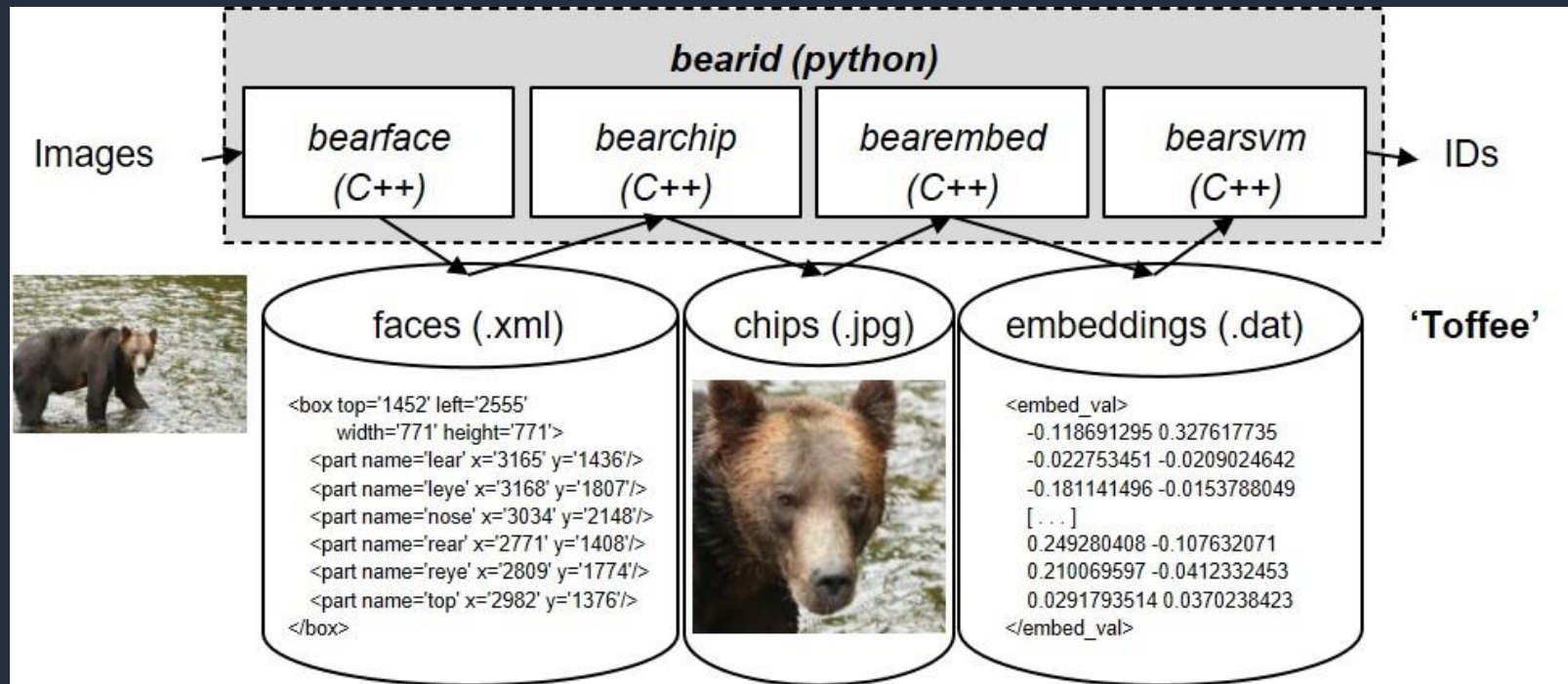
Brown bears (wild, DSLR)

Detection = 0.98, Classification = 84%

Clapham et al. (2020) Ecol and Evol, 10 (23)



Bear identification ML pipeline



“FaceNet: A Unified Embedding for Face Recognition and Clustering,” (Schroff et al., 2015)



BEARS  **MIND**

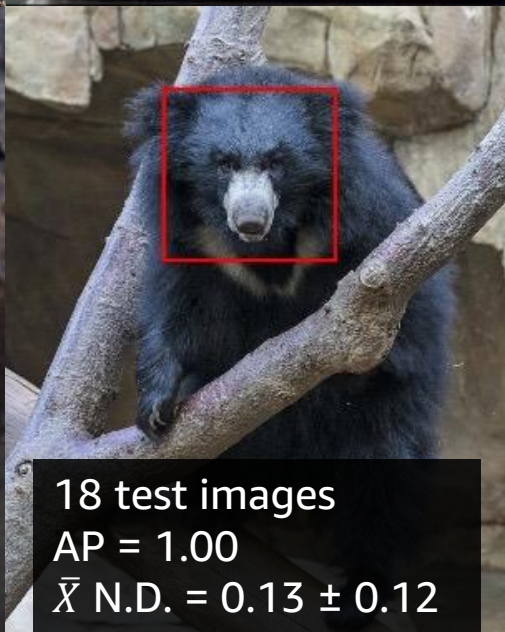
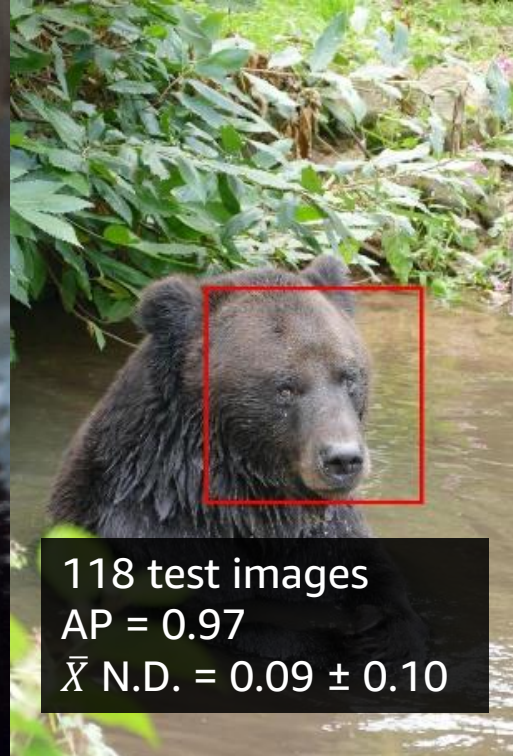
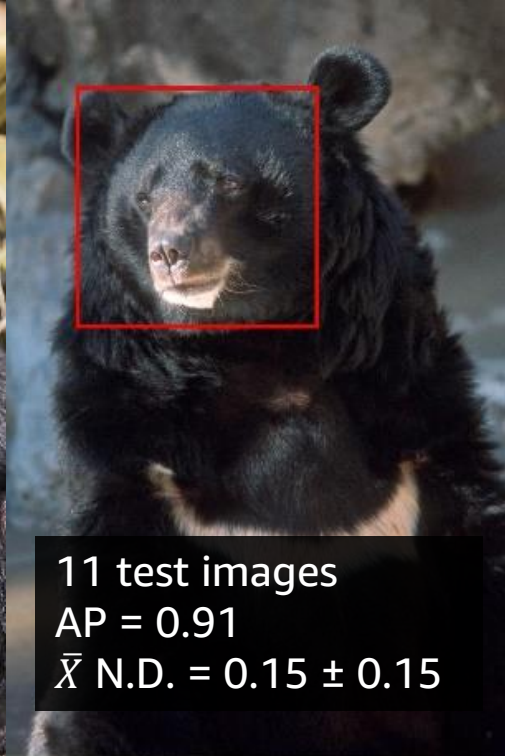
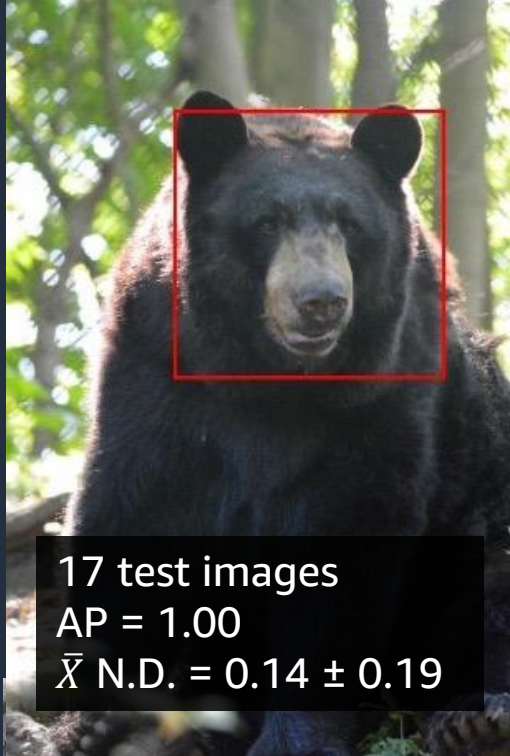


All species

438 test images

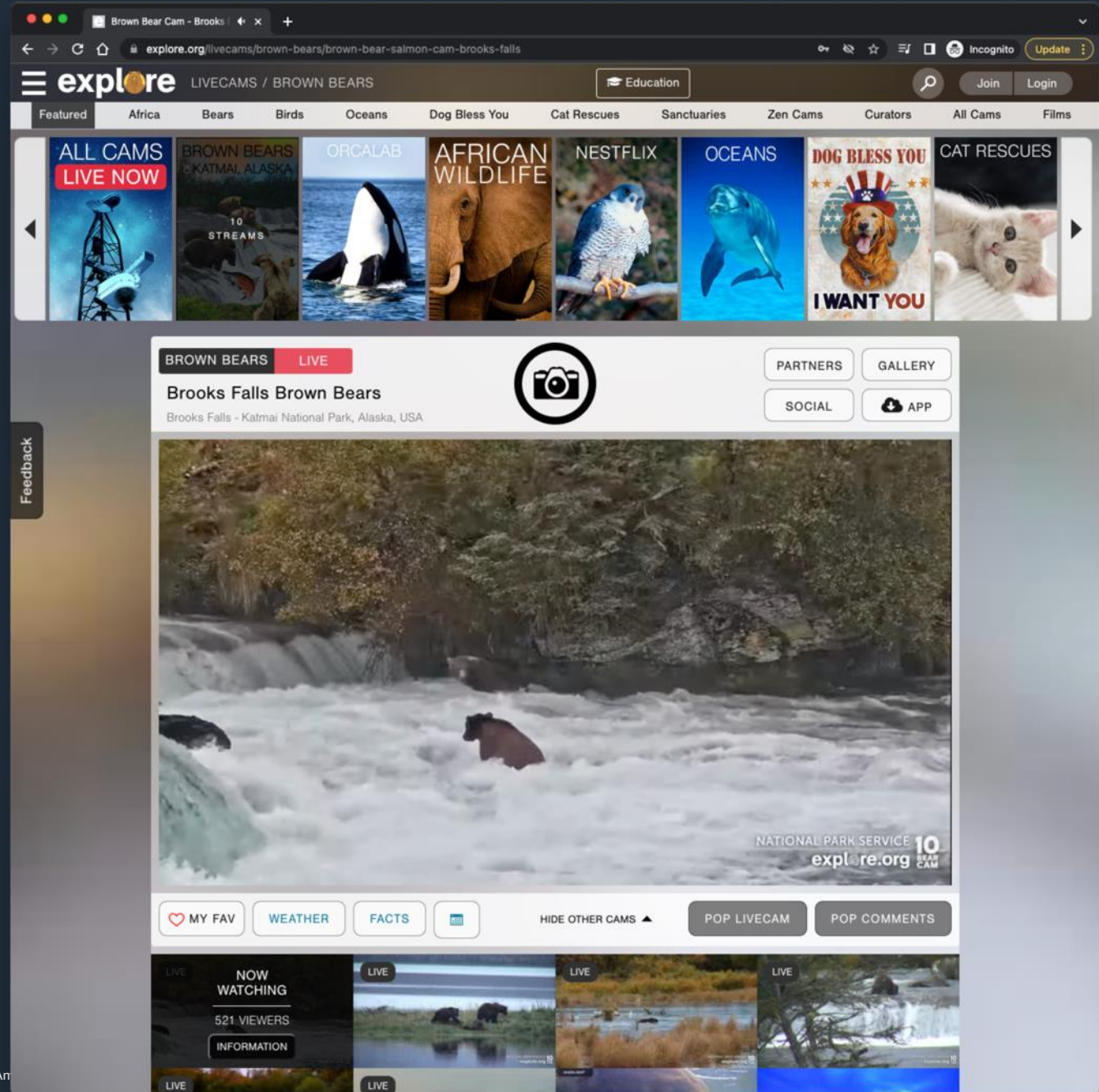
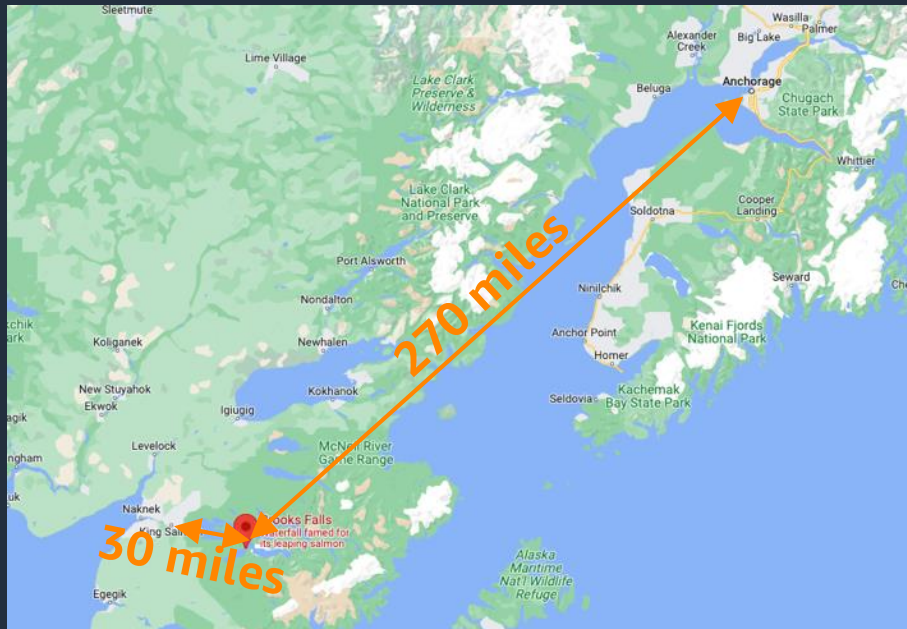
Average Precision = 0.96

$\bar{X}(\pm \text{SD})$ normalized distance = 0.08 ± 0.12

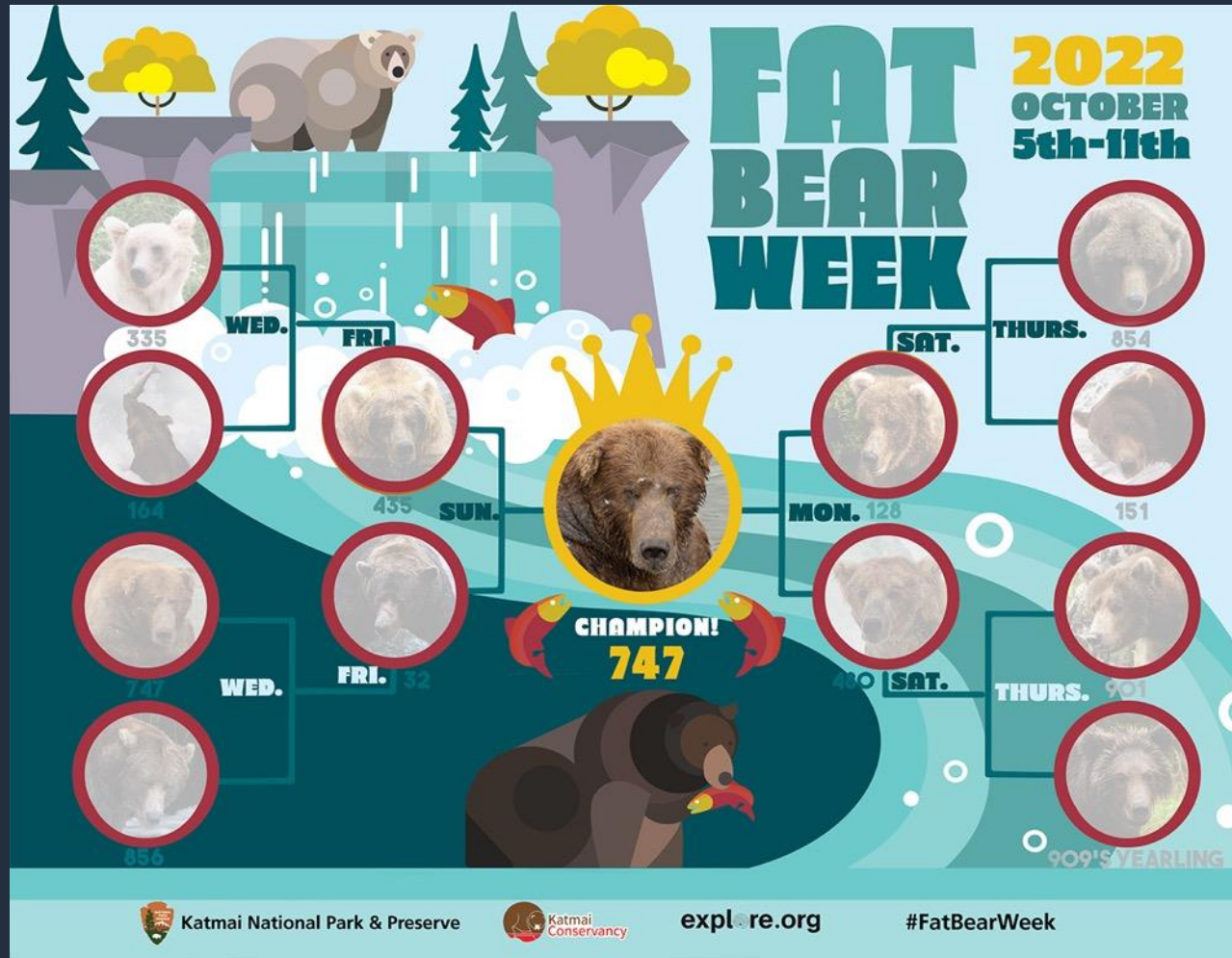


Explore.org

- Brooks Falls Brown Bears
 - Katmai National Park
 - 6+ webcams
- Disqus/YouTube/Facebook



Fat Bear Week



Explore.org Demo

Working with webcams

Disadvantages

- Video quality
- Not always the best angle
- Live streaming

Advantages

- Virtual access to remote locations
- Someone watching all the time
- Very knowledgeable community (Citizen Scientists)

Bearcam Companion

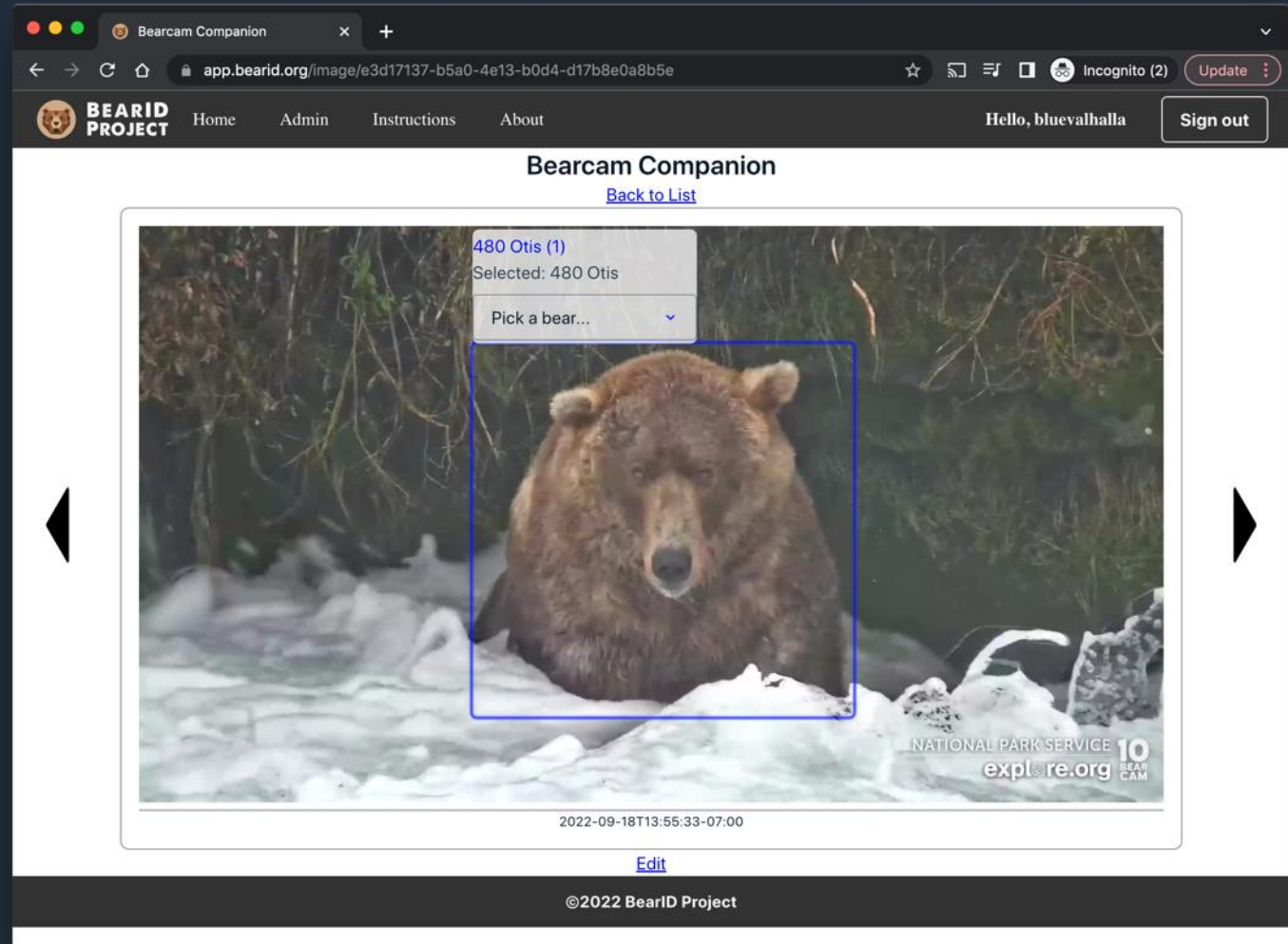


Amplify-ing bears

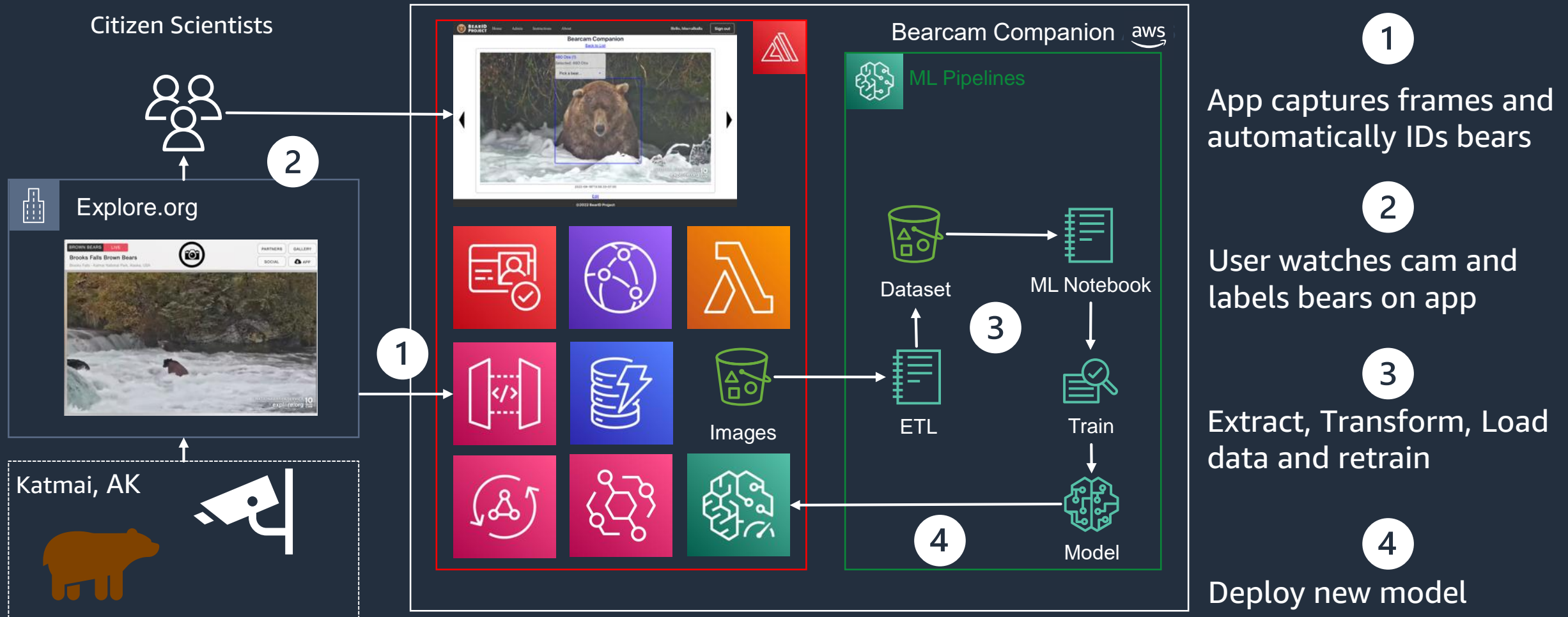


Goals of the Bearcam Companion

- Develop a web application
- Engage bearcam community
- Human-in-the-loop ML
- Train model to ID bears on cams
- M♥P
 - Grab frames from cams
 - Auto-detect bears
 - Logged in users can ID bears
 - Users can view images and IDs
 - Admin mode for editing



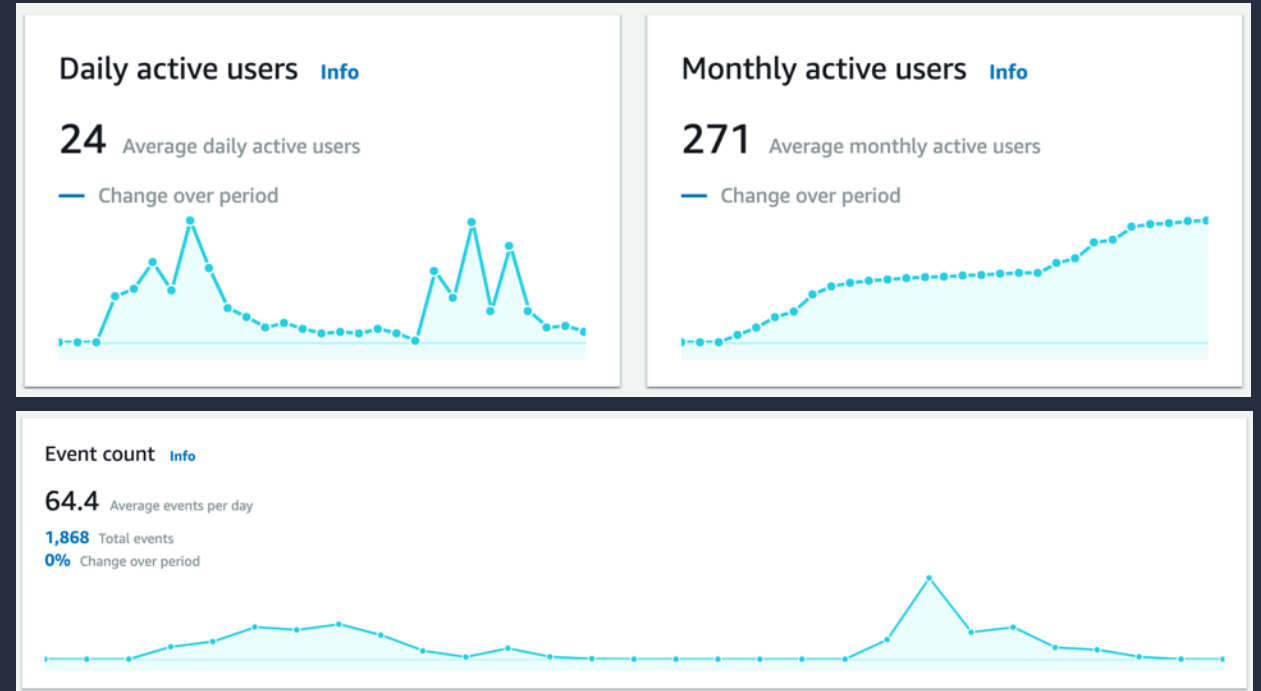
Human-in-the-Loop



Bearcam Companion Demo

Results so far

- Launched in August 2022
- Stats (from Amplify Studio)
 - Users: 300+
 - Images: 4,000+
 - Objects: 8,000+
 - Identifications: 4,000+
- Enabled Amazon Pinpoint
 - Usage metrics
 - Event metrics



What's next?

Bearcam Companion

- Develop HITL pipeline
- Develop/improve models
- Support more cams

BearID

- Explore new models
- Video tracking
- On-device ML



Links and Resources

BearID and Webcams

- [BearID Project](#)
- [Bearcam Companion](#)
- [Bearcam Companion blogs](#)
- [Explore.org](#)
 - [Explore Brown Bear Cams](#)
 - [Explore Snapshots](#)

Communities and Projects

- [WILDLABS.NET](#)
- [Conservation X Labs Challenges](#)
- [FruitPunch AI Challenges](#)
- [iNaturalist](#)
- [Zooniverse](#)



Thank you!

Ed Miller

twitter.com/bluevalhalla

linkedin.com/in/bluevalhalla/

