



BIG DATA & REAL-TIME ANALYTICS

# Analytics in 15

Simplify Data Discovery with  
Amazon Redshift Query Editor

Uday Narayanan

Sr. Solutions Architect, Analytics  
Amazon Web Services

# Amazon Redshift



## Analyze all your data

Break through data silos and gain real time and predictive insights on all your data in a few clicks, accessing data in place or with minimal data movement



## Price-performance at any scale

Gain up to 5x better price performance than any other cloud data warehouse, with performance innovation out of the box at no additional cost to you



## Easy, secure, and reliable

Get from data to insights in seconds without worrying about infrastructure management, with the most secure and reliable data warehouse service

# Self-service analytics requirements

## DEMOCRATIZE ACCESS



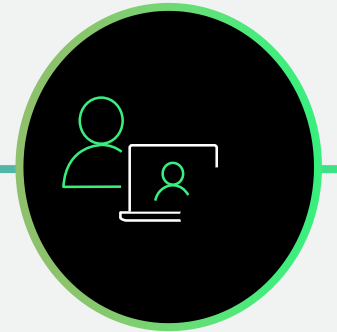
Want to provide a web-based tool to end-users to empower self-service analytics, help transition them to become citizen data scientists

## REDUCE TIME TO INSIGHT



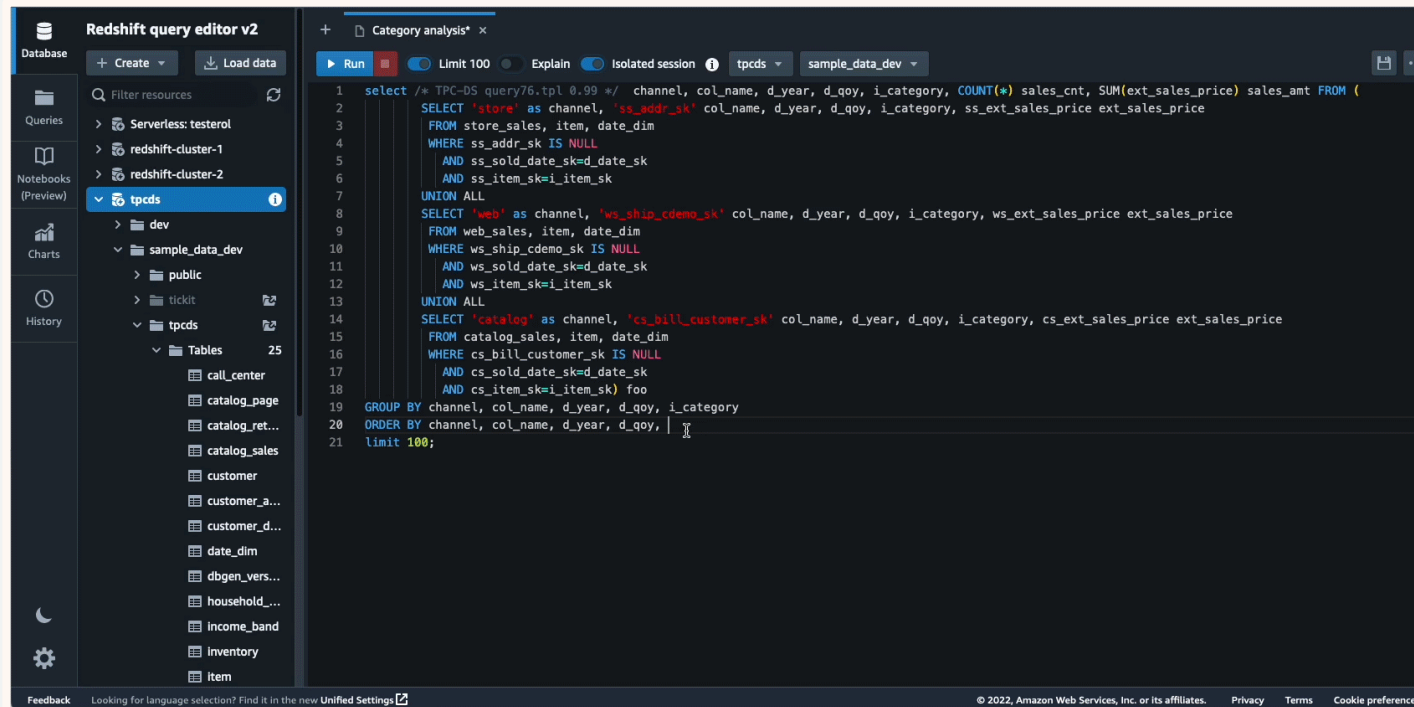
Need a tool where users can author SQL queries to analyze data and visualize results to gain fast insights. Want to use ML-based predictions for advanced analytics

## SHARE FINDINGS WITH TEAMMATES



Users want to collaborate with team members and share queries and findings

# Amazon Redshift Query Editor V2



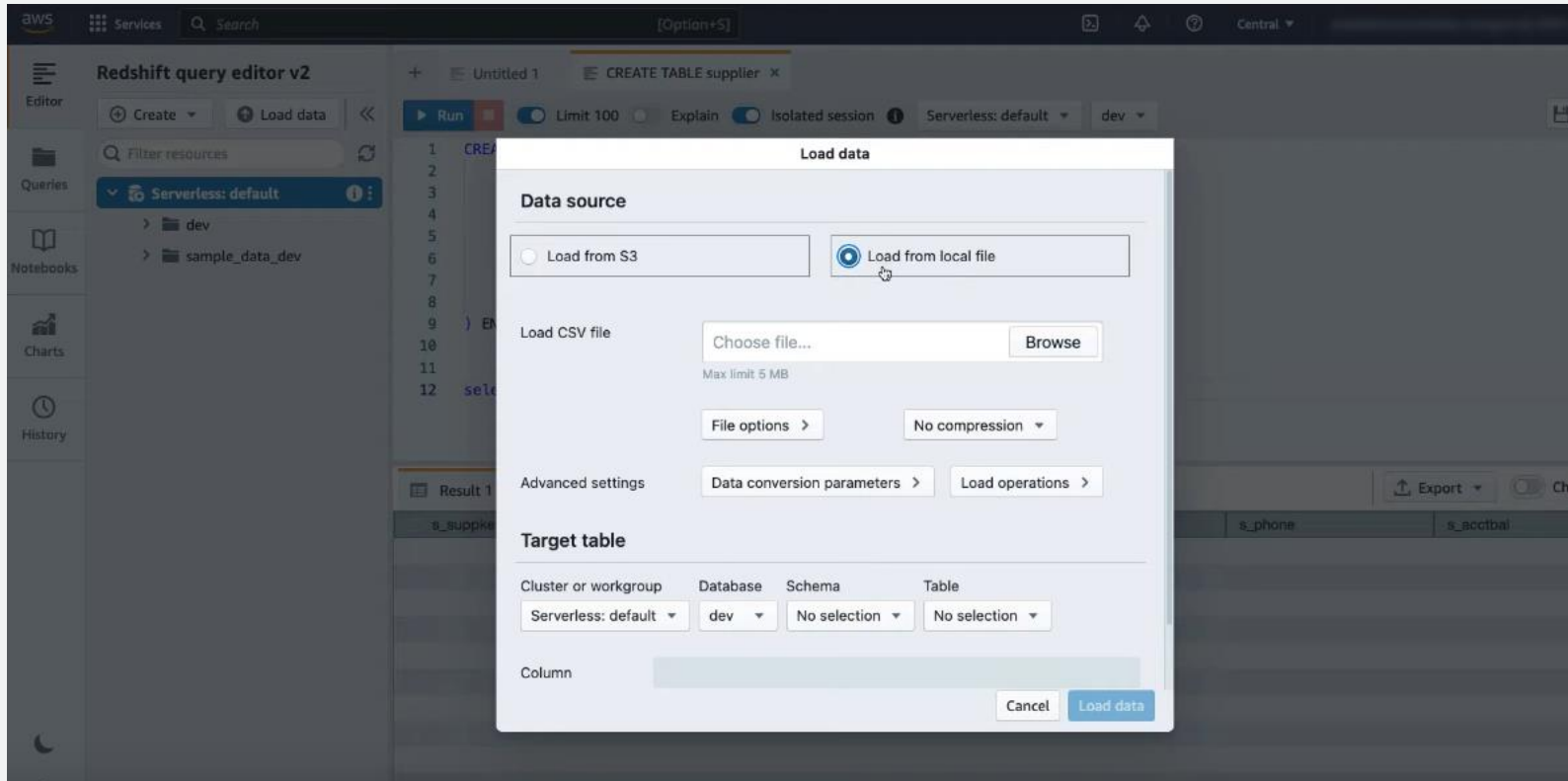
Browse, create schema & tables, load data, write SQL queries & stored procedures, visualize query results with charts, and track query changes

Improved collaboration with Notebooks to author, organize, and annotate queries

Allows users to access with Identity Provider (IdP) credentials



# New feature - load data from a local file to Amazon Redshift



Max file size: 5MB

File format supported: CSV

Advanced settings include data conversion parameters, load operations

# Demo



# Thank you!

Uday Narayanan

<https://www.linkedin.com/in/udaynarayanan/>

To learn more, please visit:

[Amazon Redshift webpage](#)

[Simplify data loading with Amazon Redshift Query Editor V2 video](#)