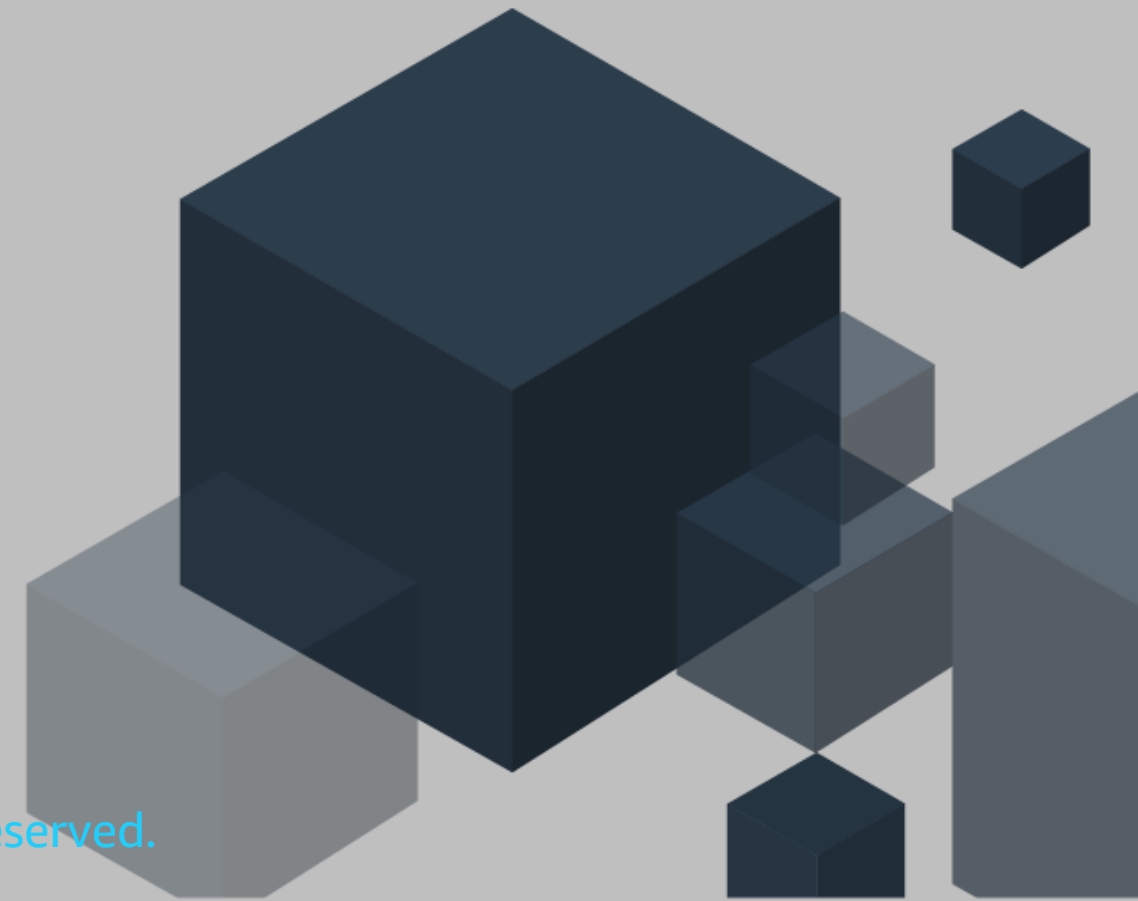




Monitoring Your .NET and SQL Server Applications on Amazon EC2

Purvi Goyal

Sr. Product Manager, Amazon EC2
Amazon Web Services



Agenda

Monitoring challenges in the DevOps world

CloudWatch Application Insights for .NET & SQL Server

How it works

Demo

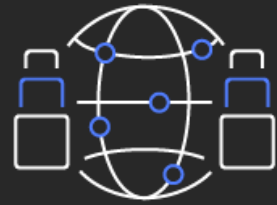
Q & A

Resources

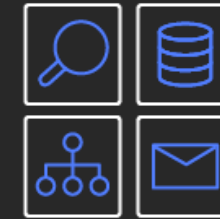
Monitoring Challenges



Monitoring in the DevOps world



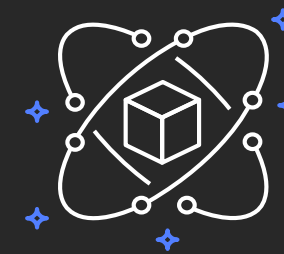
Resource utilization



Monitor multiple individual systems & technologies



Detect and troubleshoot problems



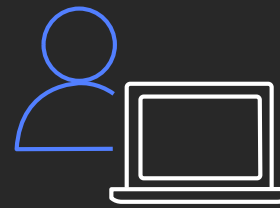
Set up monitoring infrastructure and systems

Amazon CloudWatch



Get visibility

Built-in and custom metrics,
Application and Windows Event logs



Monitor

Alert on anomalies, errors
Perform calculation of metrics

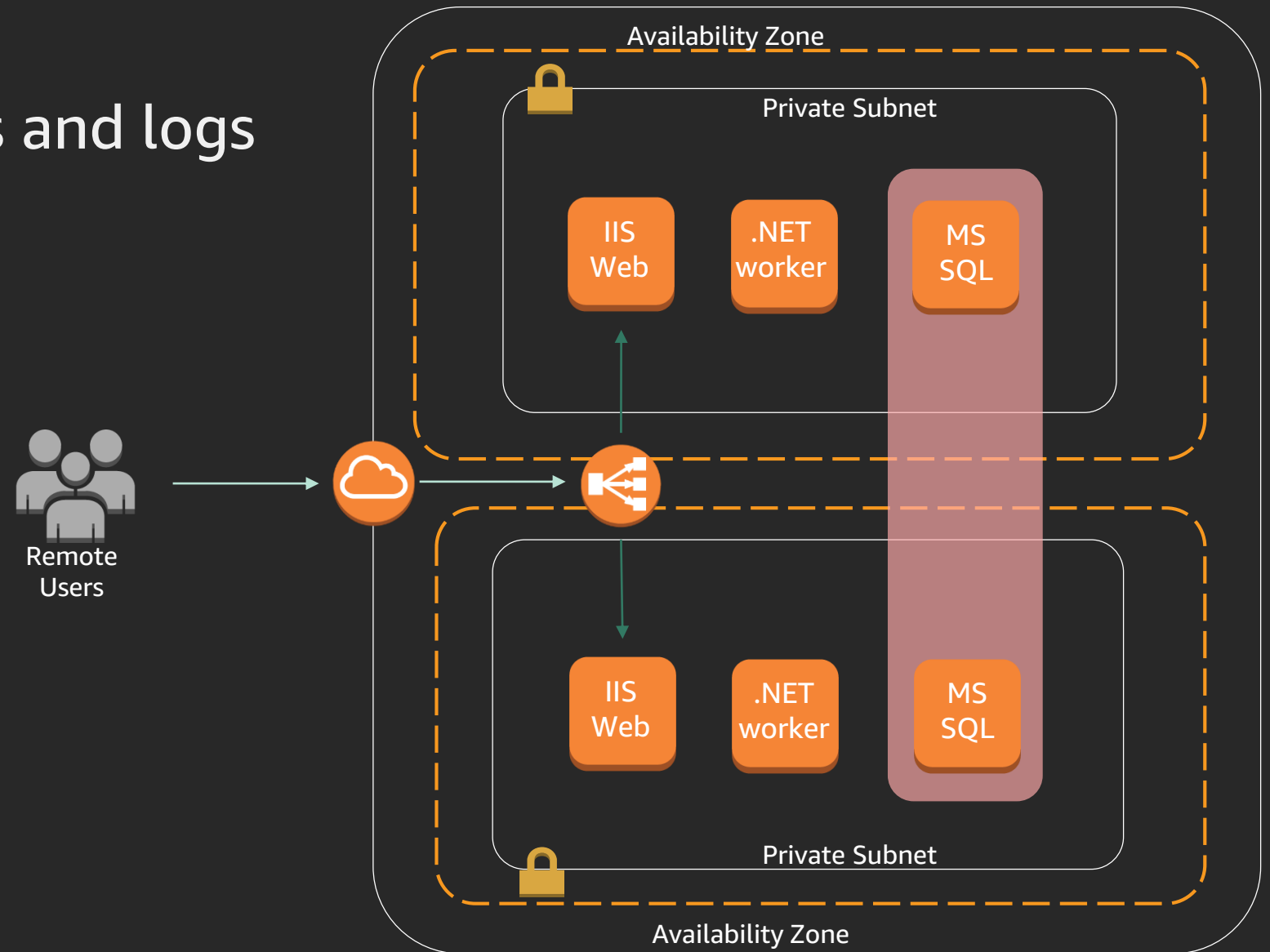


Take action

Visualize health using dashboards,
trigger actions/events

Application monitoring gaps

- Identify and set-up relevant metrics and logs



Application monitoring gaps

- Identify and set-up relevant metrics and logs

- Detect signs of a problem



Application monitoring gaps

- Identify and set-up relevant metrics and logs

IIS logs

- Detect signs of a problem

```
#Software: Microsoft HTTP API 2.0
#Version: 1.0
#Date: 2017-09-15 21:02:38
#Fields: date time c-ip c-port s-ip s-port cs-version cs-method cs-uri streamid sc-status s-
2017-09-15 21:04:36 :::1%0 50114 :::1%0 80 HTTP/1.1 GET /crash - 503 1 AppOffline .NET+v2.0
2017-09-15 21:04:38 :::1%0 50117 :::1%0 80 HTTP/1.1 GET /crash - 503 1 AppOffline .NET+v2.0
2017-09-15 21:15:23 :::1%0 50162 :::1%0 80 HTTP/1.1 GET /crash - 503 1 AppOffline .NET+v2.0
2017-09-15 21:15:25 :::1%0 50164 :::1%0 80 HTTP/1.1 GET /crash - 503 1 AppOffline .NET+v2.0
```

- Diagnose and troubleshoot

SQL Server error log

Name	Last Written	Size	view	watch	download
log/ERROR	January 14, 2015 at 5:17:35 AM UTC-8	6.1 kB	view	watch	
log/ERROR.1	January 13, 2015 at 3:59:00 PM UTC-8	53.3 kB	view	watch	
log/ERROR.2	January 12, 2015 at 3:59:00 PM UTC-8	5.9 kB	view	watch	download
log/ERROR.3	January 11, 2015 at 3:59:00 PM UTC-8	5.9 kB	view	watch	download
log/ERROR.4	January 10, 2015 at 3:59:00 PM UTC-8	5.9 kB	view	watch	download

Windows Event logs

Creation Time	Event Data
2014-09-16 17:15:51 UTC	▶Sep 16 00:14:16 ip-10-144-226-204 kernel: imklog 5.8.10, log source
2014-09-16 17:15:51 UTC	▶Sep 16 00:14:16 ip-10-144-226-204 rsyslogd: [origin software="rsysl
2014-09-16 17:15:51 UTC	▶Sep 16 00:14:16 ip-10-144-226-204 kernel: [0.000000] Initializing
2014-09-16 17:15:51 UTC	▶Sep 16 00:14:16 ip-10-144-226-204 kernel: [0.000000] Initializing
2014-09-16 17:15:51 UTC	▶Sep 16 00:14:16 ip-10-144-226-204 kernel: [0.000000] Initializing
2014-09-16 17:15:51 UTC	▶Sep 16 00:14:16 ip-10-144-226-204 kernel: [0.000000] Linux version
2014-09-16 17:15:51 UTC	▶Sep 16 00:14:16 ip-10-144-226-204 kernel: [0.000000] Command line:
2014-09-16 17:15:51 UTC	▶Sep 16 00:14:16 ip-10-144-226-204 kernel: [0.000000] e820: BIOS-pr
2014-09-16 17:15:51 UTC	▶Sep 16 00:14:16 ip-10-144-226-204 kernel: [0.000000] BIOS-e820: [m
2014-09-16 17:15:51 UTC	▶Sep 16 00:14:16 ip-10-144-226-204 kernel: [0.000000] BIOS-e820: [m
2014-09-16 17:15:51 UTC	▶Sep 16 00:14:16 ip-10-144-226-204 kernel: [0.000000] BIOS-e820: [m
2014-09-16 17:15:51 UTC	▶Sep 16 00:14:16 ip-10-144-226-204 kernel: [0.000000] BIOS-e820: [m
2014-09-16 17:15:51 UTC	▶Sep 16 00:14:16 ip-10-144-226-204 kernel: [0.000000] NX (Execute D
2014-09-16 17:15:51 UTC	▶Sep 16 00:14:16 ip-10-144-226-204 kernel: [0.000000] SMBIOS 2.4 pr

Amazon CloudWatch Application Insights for .NET and SQL Server



Amazon CloudWatch Application Insights for .NET & SQL Server

Easily and quickly detect and diagnose common problems with .NET and SQL Server applications



Visibility into monitoring data



ML-based anomaly detection



Visualize root-cause with automated dashboards



Remedial actions using Systems Manager

Benefits

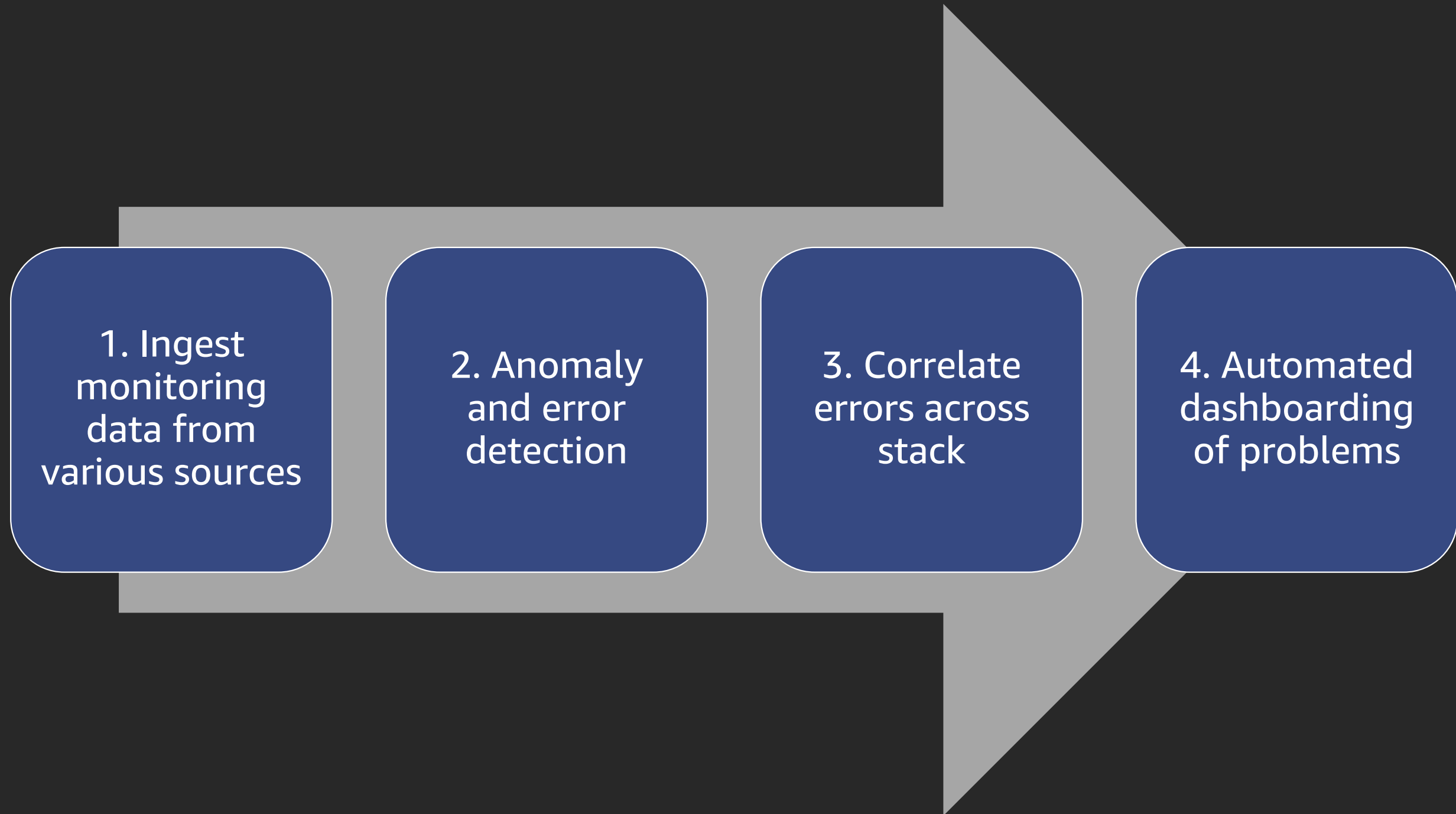
- Easily set-up monitoring for .NET applications
- Out-of-the-box analysis
- Reduce mean-time-to-resolution (MTTR)

A common scenario...

How it works



How it works



Supported data sources

Platform Metrics

- Built-in platform metrics
- Advanced custom
- Custom alarms

Windows Performance Counters

- .NET SLR
- SQL Server metrics
- IIS counters

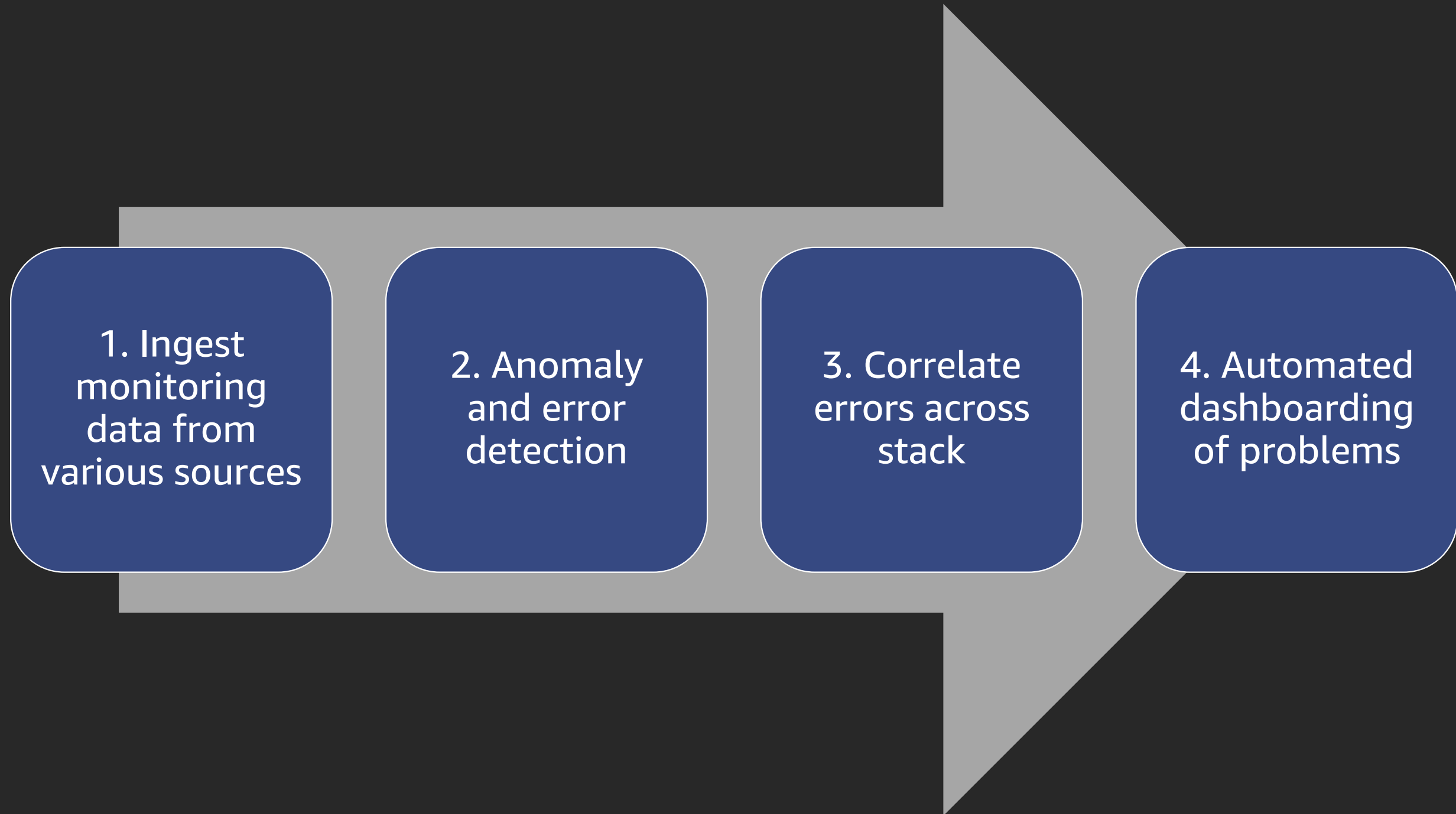
Application Logs

- Microsoft IIS
- Microsoft SQL Server Error log
- Custom .NET application

Windows Event Logs

- System, Security and Application
- Windows and application logs

How it works



Problem-based automated dashboards

CloudWatch: Application Insights

Problem Id: p-2743c262-b50d-4364-bc76-474aa0f311f6 [Edit configuration](#)

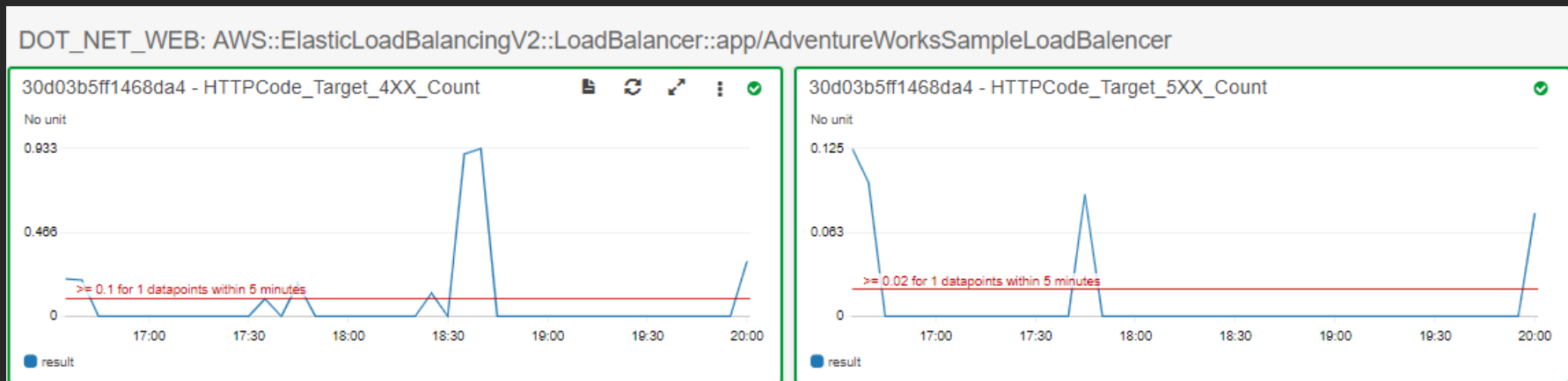
Problem summary

Severity	Problem summary	Source	Start / End time	Status	Resource group
High	SQL: Transaction Log Full	i-023bb397781704add	2019-06-20T16:16:51Z	In progress	testapp2

Insight ⓘ

SQL Server Engine issues a 9002 error when the transaction log is full. To make log space available, you may back up the log, free up disk space, move the log file to a disk drive with sufficient space, increase the size of the log file, or terminate a long-running transaction.

Help us improve our models: This insight is useful This insight is not useful [Submit feedback](#)



SQL_SERVER: AWS::EC2::Instance::i-023bb397781704add

Log Group: SQL_SERVER, Log Type: SQL_SERVER, TransactionLogFull

#	@timestamp	@message
1	2019-05-20T19:37:06.42Z	2019-05-20 19:37:06.82 spid19s Error: 9002, Severity: 17, Sta
2	2019-05-20T19:22:51.344Z	2019-05-20 19:22:51.31 spid61s Error: 9002, Severity: 17, Sta
3	2019-05-20T19:07:06.417Z	2019-05-20 19:07:06.34 spid40s Error: 9002, Severity: 17, Sta
4	2019-05-20T18:37:05.912Z	2019-05-20 18:37:05.80 spid31s Error: 9002, Severity: 17, Sta
5	2019-05-20T18:32:51.507Z	2019-05-20 18:32:51.27 spid59s Error: 9002, Severity: 17, Sta
6	2019-05-20T18:18:48.138Z	2019-05-20 18:18:48.06 spid53 Error: 9002, Severity: 17, Sta
7	2019-05-20T18:18:48.138Z	2019-05-20 18:18:48.06 spid53 Error: 9002, Severity: 17, Sta
8	2019-05-20T18:07:05.395Z	2019-05-20 18:07:05.32 spid36s Error: 9002, Severity: 17, Sta

Demo



Common Problems

- **Microsoft SQL Server**
 - Failed backups, memory leak errors, database I/O operation errors, SQL time-out due to memory lock, too many parallel operations
- **Microsoft IIS**
 - HTTP request URI too large, read access forbidden, I/O operation aborted, Client request time-out, 4XX and 5XX errors

Summary

- CloudWatch Application Insights for .NET & SQL Server brings together CloudWatch capabilities
- Easy set-up and getting started experience
- Machine-learning based problem detection
- Faster troubleshooting through automated dashboards
- Reduced MTTR and improved user experience

Questions?

For more information:

<https://docs.aws.amazon.com/AmazonCloudWatch/latest/monitoring/appinsights-getting-started.html>

Contact: **cloudwatch-application-insights-feedback@amazon.com**

Thank you!



End



Thank you!

Purvi Goyal

goyapurv@amazon.com

cloudwatch-application-insights-feedback@amazon.com



Please complete the session survey in the mobile app.

