



# Migrating Data to AWS

Understanding your options

## AWS Storage

Chris Rogers, Business Development

Paul Reed, Principal Product Manager

Bryan Berezdivin, Business Development

August 2019

A note on questions. **Ask away!**

# Data migrations – key questions

**Why** are you and your teams moving data to AWS?

**What** is the data you're moving?

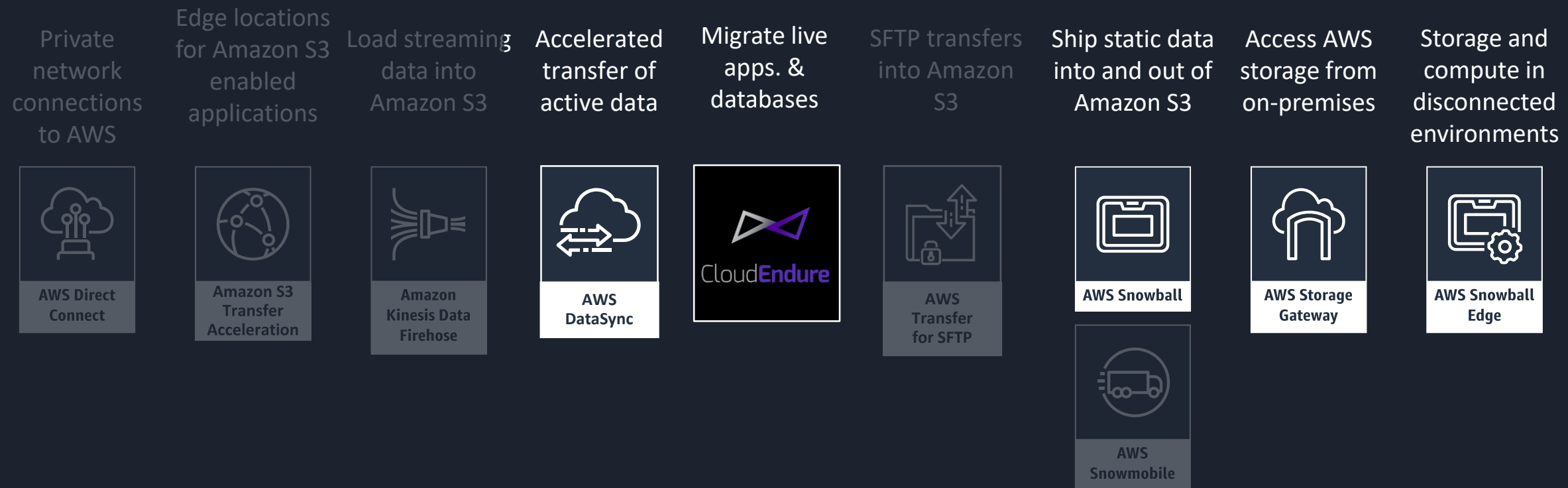
**Where** is the data going – which service/for what application & use case?

**When** do you need the data off your array/out of the DC/in AWS?

**How** much data? How much usable network capacity?

**How you move the data depends on all of the above.**

# How? AWS data transfer & migration portfolio



# Data Migration Use Cases

# Use case example – Retiring a remote site

**Why?** Shutting down an industrial site. Not adding storage to DC.

**What?** 75 TB of machine data, logs and files to archive

**Where?** Amazon S3 / Glacier Deep Archive

**When?** A month or two

**How much bandwidth?**

Not much... ~100 MB



# AWS Snow family – Data migration & edge computing

Overcome network limitations with secure, portable storage and compute



AWS Snowball

Data Transfer Only

- 50 or 80 TB capacity
- To migrate up to petabytes



AWS Snowball Edge

Data Transfer & Edge Compute

- 100 TB capacity
- To migrate up to petabytes
- Amazon EC2 AMI, and AWS Lambda support



AWS Snowmobile

20+ Petabyte Data Transfer

- 100 PB capacity
- To migrate up to exabytes
- A 45-ft container

[aws.amazon.com/snow](https://aws.amazon.com/snow)

# Use case example – NAS migration



**Why?** Migration of an analytics application and its data

**What?** 1 PB of files

**Where?** Amazon EFS

**When?** A month

**How much bandwidth?** 5 Gbps



# AWS DataSync

Online transfer service that simplifies, automates, and accelerates moving data



Fast

Parallelized transfer,  
10Gbps per agent

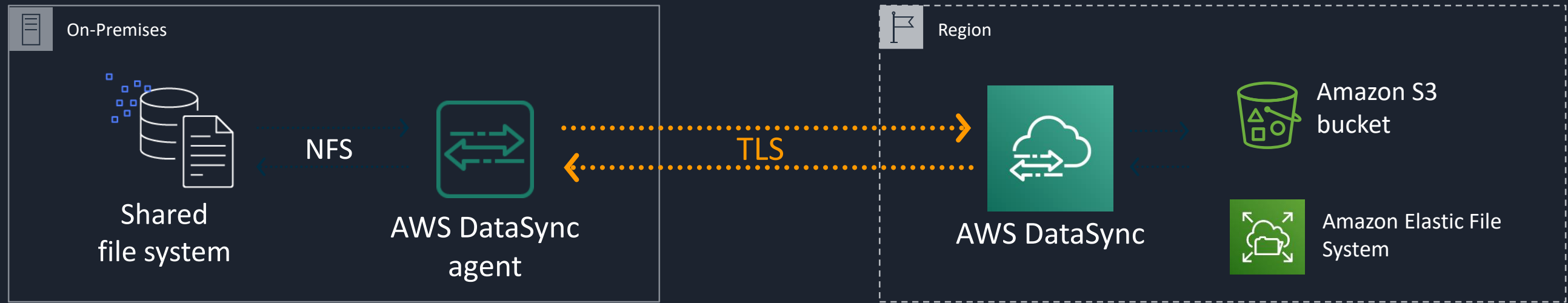


Automated

Data validation, filtering, throttling



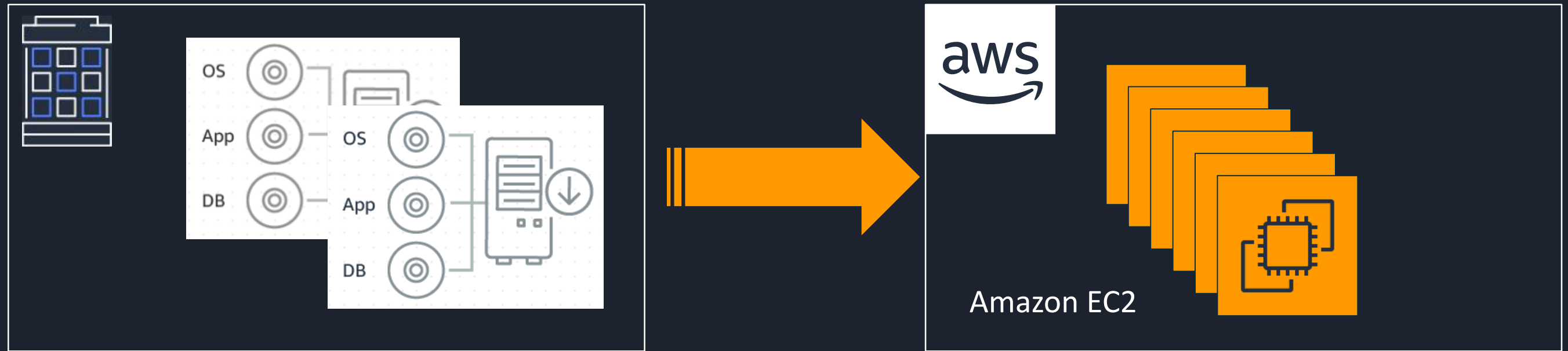
One-time migrations  
or on-going transfers



[aws.amazon.com/datasync](https://aws.amazon.com/datasync)



# Use case example – VM farm migration



**Why?** Data center shutdown

**When?** 6 weeks

**What?** 700 VMs / 250 TB

**How much bandwidth?** 10 GbE

**Where?** Amazon EC2

# CloudEndure Migration

Eliminate complexity and reduce risk for any size migration



**Flexible:** Migrate from any source; wide database, VM, OS, and application support



**Automated:** Simple setup to get started in minutes, with the same process for any workload



**Reliable:** Migrate with minimal business disruption; short cutover windows and non-disruptive tests

Available at no cost to customers and partners

[aws.amazon.com/cloudendure/](https://aws.amazon.com/cloudendure/)



# Use case example – hybrid data processing flows



**Why?** Processing in AWS

**What?** Research data  
~20-50 TB/day/site

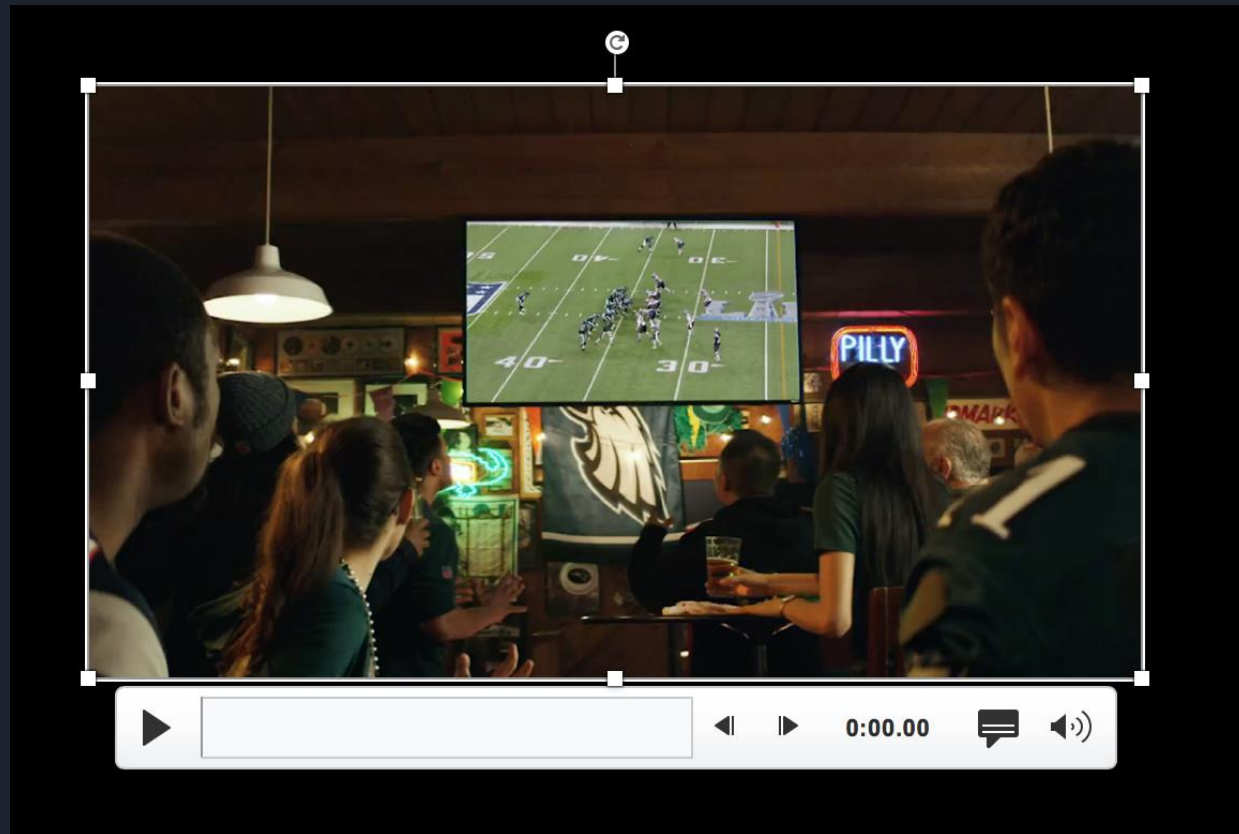
**Where?** Amazon S3

**When?** 6 weeks

**How much bandwidth?** 10 Gbps

**aws** storage

# Use case example - migrating media archives



**Why?** Scale & decommissioning NAS

**What?** 200 TB of files

**Where?** Amazon EFS

**When?** A month

**How much bandwidth?** 5 Gbps

**Register Today!!**

[reinvent.awsevents.com](https://reinvent.awsevents.com)

AWS  
**re:Invent**

**December 2 – 6 2019 | Las Vegas, Nevada**